



TWO CHANNEL CLINICAL AUDIOMETER



AUDIOSTAR PRO
CONFIG APP

Title: AudioStar Pro Config App Manual

Manufacturer

Grason-Stadler
10395 West 70th Street
Eden Prairie, MN 55344
USA

Copyright © 2023 Grason-Stadler. All rights reserved. No part of this publication may be reproduced or transmitted in any form or by any means without the prior written permission of Grason-Stadler. The information in this publication is proprietary to Grason-Stadler.

This product incorporates software developed by others and redistributed according to license agreements. Copyright notices and licenses for these external libraries are provided in a supplementary document that is included with the other software applications distributed with this product.



TABLE OF CONTENTS

Table of Contents	1
Introduction	4
Intended Use	4
Getting Started.....	5
Software Installation.....	5
Minimum PC Requirements	5
Supported Operating Systems.....	5
Required Prerequisite Software.....	5
Installing on Windows® 10 Pro	5
Uninstalling the software.....	8
Using the Config App Software.....	9
Launching AudioStar Pro Config App Software.....	9
Program Overview	9
Toolbar Menu.....	10
Download.....	10
Upload.....	11
New.....	11
Revert	11
Load.....	11
Save	12
Log.....	12
Configure	12
About.....	12
Instrument Configuration	13
Setup	13
Date and Time format.....	13
Instrument Regional Settings.....	13
Aux Intercom Button.....	14

Patient Response.....	14
Four Speaker Settings.....	14
Facility	15
Facility Information	15
Report View.....	15
Printing	17
Printer Options	17
Printout Options.....	17
Security	18
Security Level.....	18
Examiner	19
Audiometry Configuration	20
General	20
New Session.....	20
Reliability.....	21
Routing.....	21
Pure tone Average (PTA) settings.....	21
Tone	22
New Session.....	22
Auto Hz Advance	23
Speech	24
New Session.....	24
QuickSIN & BKB-SIN	25
Word Lists	26
Remove Word List	26
External CD Names	26
Word List Favorites.....	27
Norm Values	28
Troubleshooting	29
Error Messages	29

Not allowed to access the instrument!.....	29
--	----

INTRODUCTION

The GSI AudioStar Pro™ uses a Configuration Application program to configure instrument and test settings. The configuration settings are downloaded to the AudioStar Pro. It is recommended that a copy of the custom configuration is saved as a back-up on the local PC hard drive. This will allow the custom configuration to be loaded quickly in to multiple AudioStar Pro audiometers.

INTENDED USE

The Configuration Application is designed to assign facility preferences to the AudioStar Pro audiometer. This intuitive software allows the user to configure transducers, stimuli, test type, and other operation shortcuts on a remote computer and load them in to the AudioStar Pro audiometer. For configuration preferences to be loaded, the AudioStar Pro must be connected to an external computer.

Custom configurations may be saved and loaded on to multiple AudioStar Pro audiometers. The operator may also upload the configuration settings that are currently loaded on an AudioStar Pro for review, backup, modification, and/or transfer to another AudioStar Pro audiometer.

Additionally, it is possible for the user to upload log files from the AudioStar Pro to aid in troubleshooting.

GETTING STARTED

SOFTWARE INSTALLATION

Before installing the software confirm that the computer meets the minimum requirements.

Minimum PC Requirements

- CPU: 2.0 GHz, Intel dual or quad core processor or better
- RAM: 4 GB (or minimum required by OS)
- Storage: 64 GB or larger
- USB Ports: 1 minimum
- Display: 10" or larger recommended
- Resolution: 1920 x 1080 minimum
- Touch screen or mouse/trackball

Supported Operating Systems

- Microsoft Windows® 10 Pro (64 bit)
- Microsoft Windows® 11 Pro

Required Prerequisite Software

The following will be installed automatically with the Configuration Application if not already present on the PC.

- Microsoft .NET Framework version 4.7

INSTALLING ON WINDOWS® 10 PRO

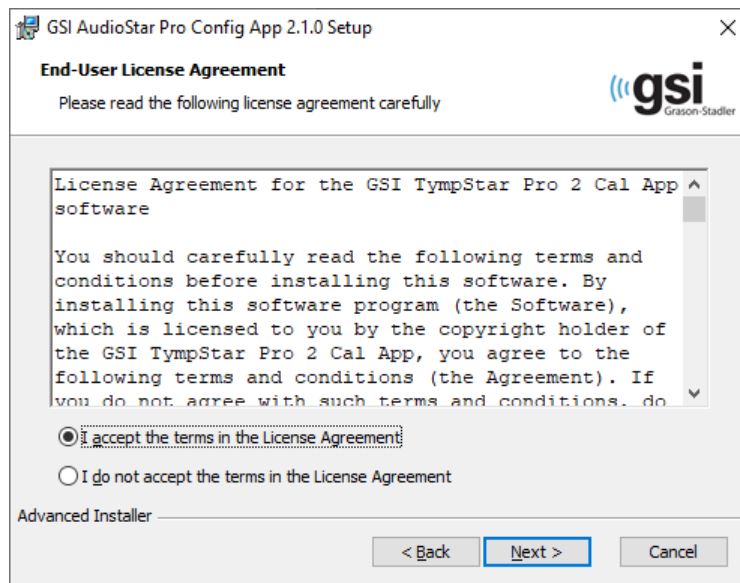
NOTE: To install this application, the user must either be an Administrator or know the Administrator password.

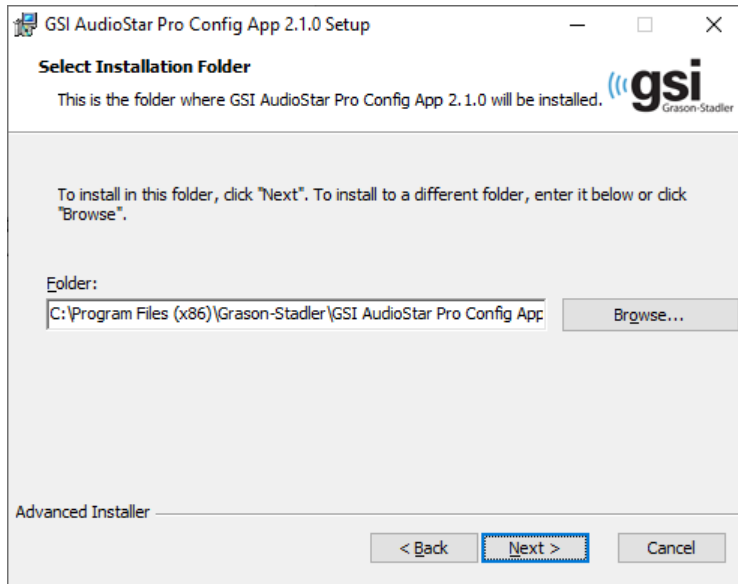
Disable the "suspend USB" power option to ensure proper communication between the instrument and PC.

1. Insert the GSI AudioStar Pro Config App Software USB drive into a USB port on the PC. If auto-run is disabled, browse the USB drive, and double click on the *AudioStarProConfigAppV2Installer.exe* file.
2. When the installation begins, Windows User Account Control may ask for permission to install the software. Answer "Yes" to the dialog to proceed with the installation.
3. The GSI AudioStar Pro Config App Setup Wizard dialog screen will be presented. Press "Next"

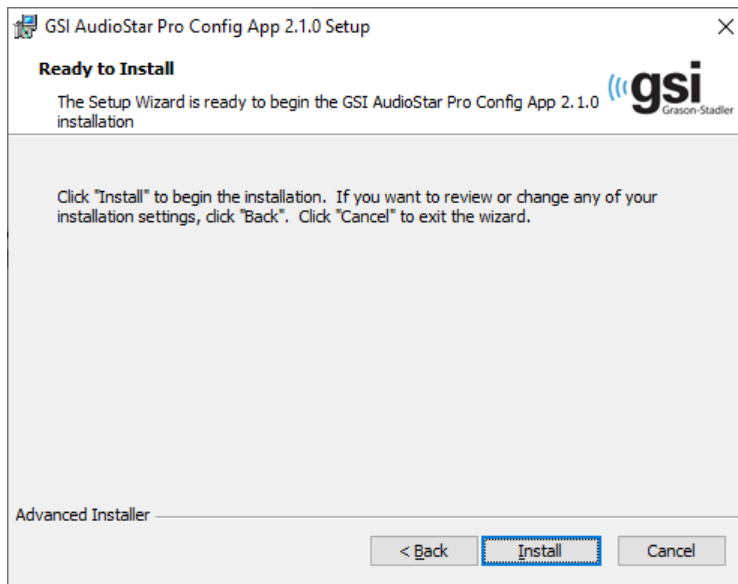


4. Read the license agreement. Select the "I accept ..." button to accept the agreement and press "Next" to continue. If you do not wish to install the software, select "Cancel" to exit the Setup. The Setup Wizard then presents the Select Installation Folder dialog.





5. To use the default folder (recommended) press the "Next" button. If you wish to install the program in a different directory, use the Browse button to locate the Folder for installation and then select "Next".



6. Select "Install". A progress bar will indicate the progress of the installation and when complete a message will be displayed to indicate that the software has been successfully installed.
7. Select "Finish"

Uninstalling the software

1. Open the Windows Settings Panel.
2. Select Apps and Features.
3. Select GSI AudioStar Pro Config App.
4. Select Uninstall.
5. Follow the onscreen instructions.

USING THE CONFIG APP SOFTWARE

LAUNCHING AUDIOSTAR PRO CONFIG APP SOFTWARE



Double-click the shortcut icon on the desktop to open the GSI AudioStar Pro Config App. It is also possible to open this application from Start>Programs>Grason-Stadler>GSI AudioStar Pro Config App 2.1.0.

NOTE: Before attempting to upload or download from the AudioStar Config App, confirm that the AudioStar Calibration Application is not running.

PROGRAM OVERVIEW

To make changes to the AudioStar Pro configuration, the AudioStar Pro must be connected to a computer that has the AudioStar Pro Config App software loaded.



The software application layout has a toolbar at the top and the configuration data that is

separated into different sections. The toolbar at the top of the application initiates communication with the AudioStar Pro to load and save the configuration to the instrument or local PC drive.

The left side of the program screen contains a 'tree view' of items that may be configured. The first section, Instrument, determines global settings of the audiometer. The second section, Audiometry, dictates default settings for audiometric evaluations. Selecting an item from the tree view displays the settings for that selection.

If the configuration requires examiners to login with a password, only users with Admin privileges (determined by the settings in the configuration) will be allowed to modify a configuration and download it to the instrument. This includes the following circumstances:

- Downloading a new or modified configuration to an instrument. If the instrument already has passwords required to login, then the Config App will prompt the user to select one of the existing examiners that is already configured in the instrument and enter their password (the user must have Admin rights).
- Opening a configuration saved to a file on the PC. If the configuration already has passwords required to login, then the Config App will prompt the user to select one of the existing examiners that is already configured in the configuration file and enter their password (the user must have Admin rights).

It is recommended that a copy of the configuration be saved as a back-up to a secure drive. This will allow the configuration to be loaded quickly onto multiple AudioStar Pro audiometers.

TOOLBAR MENU

The Toolbar menu buttons provide general application actions that may be initiated by the user.



Download

Loads the settings from the Config App into the AudioStar Pro audiometer. Start a new session or restart the AudioStar Pro after each download.

- Press the Download button in the toolbar to initiate the download process.
- This will take all the settings that are currently selected in the Config App and send them to the AudioStar Pro. The new settings will take effect after the download is complete and a new session is started, or the instrument is restarted.

- If the instrument already has passwords required to login, then the Config App will prompt the user (on the PC) to select one of the existing examiners with Admin rights in the instrument and enter the password. New configurations may not be downloaded without the Administrator's password when the logins and passwords are required.

Upload

Transfers the current configuration settings from the AudioStar Pro audiometer to the Config App on the connected computer.

- Press the Upload button on the toolbar to initiate the upload process.
- This will replace all the settings that are currently in the Config App with settings currently in the instrument.
- If the instrument already has passwords required to login, then the Config App will prompt the user (on the PC) to select one of the existing examiners with Admin rights in the instrument and enter the password. New configurations may not be downloaded without the Administrator's password when the logins and passwords are required.

New

Creates a new configuration file.

- Press the New button to load factory defaults and create a new configuration.
- Changes will not be reflected on the AudioStar Pro until they are downloaded to the unit.

Revert

Ignores any changes and returns the settings to the configuration that was loaded.

- Changes will not be reflected on the AudioStar Pro until they are downloaded to the unit.

Load

Loads configuration from a file into the Config App.

- Press the Load button in the toolbar to locate, select and open a configuration from a file into the Config App.
- This will replace all the settings that are currently selected in the Config App with the settings that are in the file.
- If the instrument already has passwords required to login, then the Config App will prompt the user (on the PC) to select one of the existing examiners with Admin rights in the instrument and enter the password. New configurations may not be

downloaded without the Administrator's password when the logins and passwords are required.

Save

Saves the current configuration in the Config App to a file on the PC. This option is used to back up the instrument's configuration or to use the same configuration on multiple AudioStar Pro audiometers.

- Press the Save button in the toolbar to initiate the save to file process.
- This will take all the settings that are currently selected in the Config App and save them to a file on the PC. The user may rename the file and copy it to another location or PC.

Log

In the event of an error, the Log section allows a log file to be uploaded from the AudioStar Pro to the computer. This file may facilitate comprehensive troubleshooting by the factory. Due to the amount of data obtained, it may take over 5 minutes to create the log file.

- Press Log icon in the toolbar
- Press Email Logs to upload the log files as an email attachment which can be sent directly to service@grason-stadler.com.
- Press Save Logs to initiate the upload of the log files and save them to a specific location on the PC.

NOTE: A complete description of the problem or steps that caused the error must be described in body of the email prior to sending.

Configure

Allows the user to select the Config App display language on the PC.

- Press the Configure button in the toolbar.
- Select a display language from the drop down menu.
- The new language setting will take effect when the Config App software is restarted.

About

Opens the About dialog box with the software version and copyright notice.

INSTRUMENT CONFIGURATION

Setup

Date and Time

Date Format
☒ mmddyyyy ☐ ddmmyyyy ☐ yyyymmdd

Current Date 08/03/2023

Time Format
☒ 12 Hour ☐ 24 Hour

Current Time 01:37:29 PM

Apply Now

Instrument Regional Settings

Upload configuration from instrument to load regional settings.

Display Language English (United States)

Symbol Set USA

AUX Intercom Button

AUX Intercom Button Acts As:

Patient Response Button

Number of buttons connected to the audiometer

4-Speaker Settings

Default Left/Right Routing		Speaker Description
Ch1 (Test)	Ch2	
<input checked="" type="checkbox"/>	<input type="checkbox"/>	1 Right
<input type="checkbox"/>	<input checked="" type="checkbox"/>	2 Left
<input type="checkbox"/>	<input type="checkbox"/>	3 FF3
<input type="checkbox"/>	<input type="checkbox"/>	4 FF4

The total number of routings across both Channel 1 and Channel 2 can not exceed 4 and the number of routings per channel must be between 1 and 3

Date and Time format

- Select the preferred date format (mm/dd/yyyy, dd/mm/yyyy, or yyyy/mm/dd) and time format (12 am/pm or 24 hour).
- If the AudioStar Pro does not display the current date or time, it may be updated from this window using the Apply Now button.

NOTE: If the AudioStar Pro contains test data from a current session, an asterisk (*) will appear in the time display. Updates to time/date will not take effect until a new session is started.

Instrument Regional Settings

- Press the Upload button, to view the regional settings available on the AudioStar Pro.
- Press the Display Language drop down menu to select the desired language.
- Press the Symbol Set drop down menu to select the desired symbols.

- Download the configuration and start a new session or restart the AudioStar Pro to have the changes take effect.

Aux Intercom Button

Allows for the Aux Intercom Button on the AudioStar Pro to function as a toggle switch or activated only when the button is pressed (push button.) When set to toggle and the Aux Intercom button is pressed, the Intercom will remain on, until the button is pressed again. This Aux Intercom can be disabled in the Configuration menu on the instrument.

Patient Response

The AudioStar Pro can accommodate up to two patient response hand switches; select either One or Two based on facility set up.

Four Speaker Settings

- Set up the default Left/Right routing for up to 4 speakers.
- Use the Speaker Description Text column to label up to 4 speakers. The text will display in the Speaker Routing menu on the AudioStar Pro.

NOTE: The total number of routings across Channel 1 and Channel 2 cannot exceed 4. The total number of routings per channel cannot exceed 3.

Facility

The screenshot displays the GSI AudioStar Pro Config App interface. On the left is a sidebar menu with categories: Instrument, Setup, Facility (highlighted), Printing, Security, and Audiometry. Under Audiometry are sub-items: General, Tone, Speech, Word Lists, and Norm Values. The main area is divided into two panels. The 'Facility Information' panel on the left contains input fields for Name, Address, Web Site, and Phone, along with a 'Clear All' button. The 'Report View' panel on the right includes a section to 'Add Facility Information To Report' with 'Yes' and 'No' buttons. Below this are 'Text Alignment' buttons (Left, Center, Right), a 'Font' dropdown set to 'Arial', a 'Font Size' dropdown set to '12', a 'Logo' input field with 'Browse' and 'Clear' buttons, and 'Logo Alignment' buttons (Left, Center, Right). At the bottom of the Report View is a 'Logo / Facility Information Report Preview' area.

Facility Information

- Enter Facility name, address, phone number, and web address.

Report View

This view allows you to enable and preview the facility information as it will appear on the printed report.

- Select Yes or No to add facility information to the report.
- Configure text alignment, font style, and font size.
- Load a graphic of the facility's logo (the Config App will automatically resize the logo to fit the space in the upper right corner of the printout).
- The facility information and logo will appear in the upper right-hand corner of the printout/report. The allocated space is 3.6 inches wide x 1 inch high or 350 x 100 pixels.

Sizing the Logo Graphic

The logo graphic and facility information (text) will appear in an area approximately 1" high by 3.5" wide on the report. The logo graphic will be scaled to fit into this area. When the logo is resized, the aspect ratio of the logo will be retained and it will be justified to the right, center, or left based on the selection in the configuration dialog. The text for the

facility information will appear over the top of the logo and will be justified to the right, center, or left based on the selection in the configuration dialog.

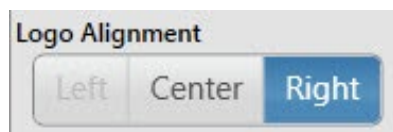
Creating a logo graphic with sides that include space for the facility text will eliminate the text on top of the graphic.

Examples:

To leave approximately 2.5" of white space for the facility text, adjust the original logo graphic sides have a ratio of 1 x 1, such as 1" x 1" or 4 cm x 4 cm. For all these sized logos, since they all have the same aspect size ratio, they will be resized to be about 1" x 1." This will leave about 2.5" ($3.5 - 1.0 = 2.5$) of open space for the facility text.

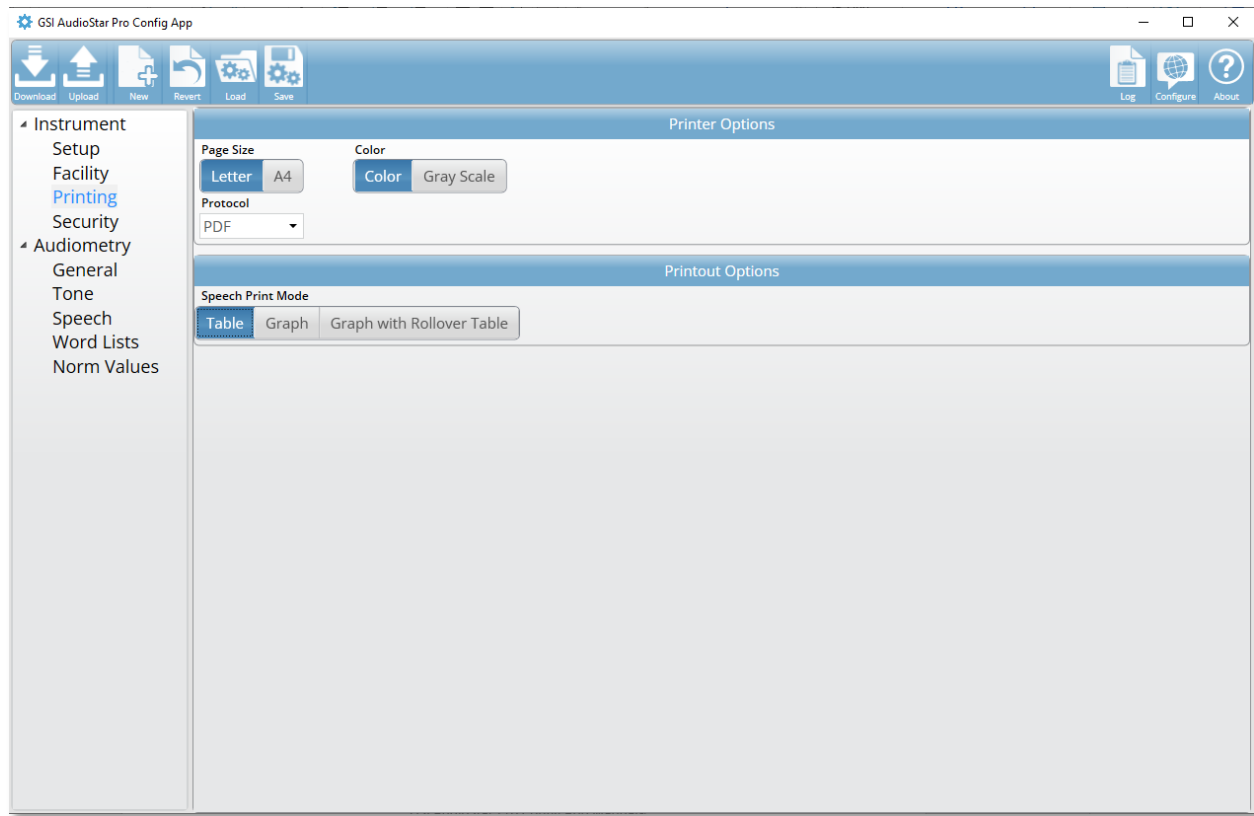
To leave approximately 1.5" of white space for the facility text, adjust the original logo graphic sides have a ratio of 1 x 2, such as 1" x 2" or 2" x 4" or 4 cm x 8 cm. For all these sized logos, since they all have an aspect ratio of about 1 x 2, they will be resized to be about 1" x 2." This will leave about 1.5" ($3.5 - 2.0 = 1.5$) of open space for the facility text.

The open space for the facility text can be on the left or right by selecting the logo alignment.



Selecting the center option, for the logo alignment will leave only half of the open space for the facility text information. The Report View provides a preview of how the logo and facility text will appear on the report printout.

Printing



Printer Options

The AudioStar Pro is equipped with a direct-to-printer feature.

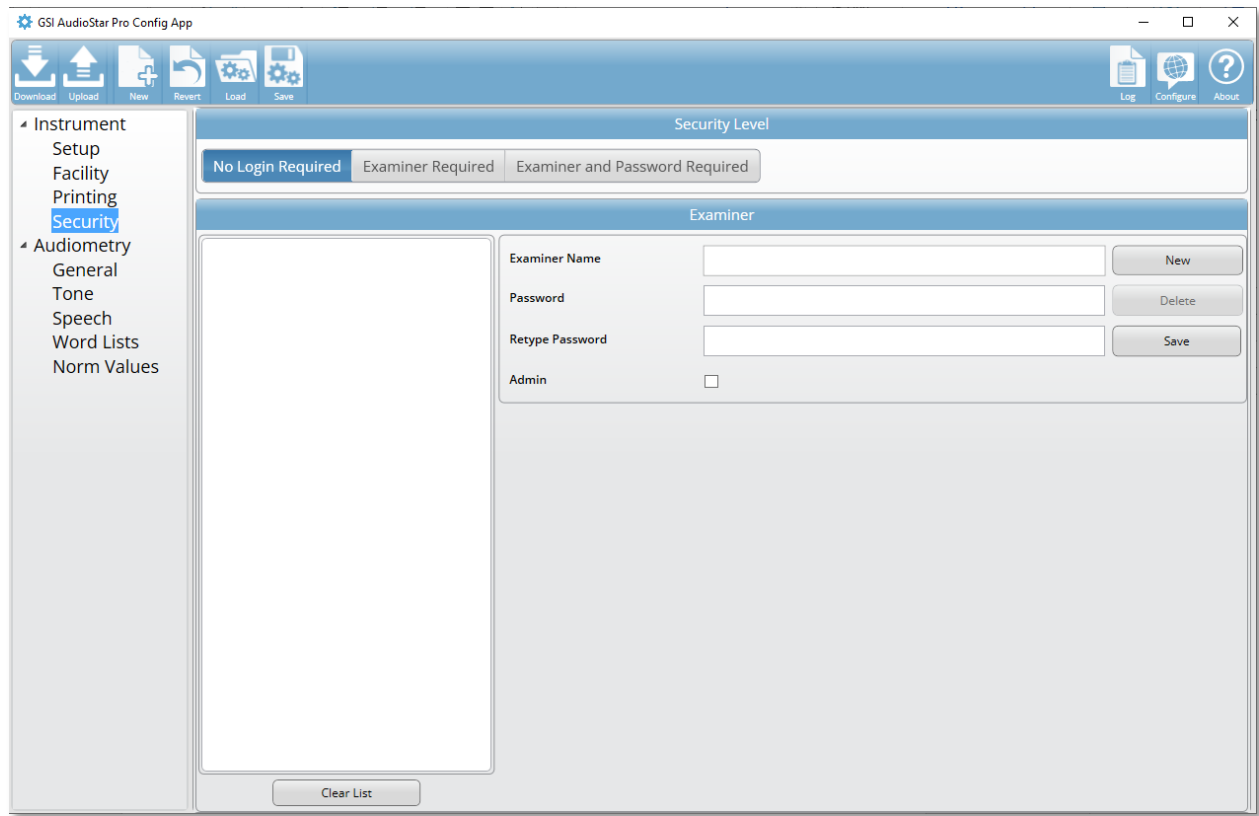
- Select the appropriate printer protocol for your HP compatible printer or PDF.
- Select report page size and color or gray scale printing defaults.

NOTE: Some laser printers do not transfer the left-ear blue color to a printable grey color; it appears as though the left ear data is not printing. To ensure printing is handled appropriately, it is recommended that a test page with data from both ears be printed in the desired format.

Printout Options

Speech Print Options determine how speech test data will be displayed in the printout. Select table, graph, or graph with rollover.

Security



Security Level

If "No Login Required" is selected:

- Anyone able to use the AudioStar Pro.
- Anyone can download or upload a configuration to the AudioStar Pro.

If "Examiner Name Required" is selected:

- A user must select an Examiner name before being able to use the AudioStar Pro.
- Anyone can download or upload a configuration to the AudioStar Pro.

If "Examiner Name and Password Required" is selected:

- A user must select an Examiner name and enter a password before being able to use the AudioStar Pro.
- Only a user *with Admin rights* will be able to download or upload a configuration to that AudioStar Pro.

The Login setting should be assigned to be consistent with facility and HIPAA requirements.

Examiner

A list of examiner names and examiner passwords may be entered under the Instrument/Security sections of Config App.

- To add a new examiner, press the New button, enter the examiner name and password, then press the Enter button.
- The examiner name may be up to 40 characters.
- Examiner Passwords may be up to 8 characters in length using any combination of lower- or upper-case letters and numbers.
- Re-type Password to confirm password entry.
- Select the Admin checkbox if this examiner should be able to change the configuration of the AudioStar Pro.
- To edit an existing examiner, select the name in the list, make the necessary changes, then press the Enter button.
- To remove an examiner, select the name in the list and press the Delete button.
- To remove all examiners in the list, select the Clear List button. This cannot be undone.

NOTE: If there is no Qwerty keyboard attached to the AudioStar Pro, the login screen will provide a numeric keypad for entering a password.

AUDIOMETRY CONFIGURATION

General

The screenshot shows the 'GSI AudioStar Pro Config App' window. On the left is a sidebar with a tree view containing: Instrument, Setup, Facility, Printing, Security, Audiometry (expanded), General (selected), Tone, Speech, Word Lists, and Norm Values. The main window is titled 'New Session' and contains several configuration sections:

- Initial Screen:** Two buttons, 'Pure Tone' (selected) and 'Speech'.
- Graph Orientation:** Three buttons: 'Left / Right', 'Right / Left' (selected), and 'Combined'.
- Bone Setting:** Two buttons: 'Forehead' and 'Mastoid' (selected).
- Use Colored SF:** 'Yes' and 'No' buttons, with 'No' selected.
- Use Bone Symbol Connection:** 'Yes' and 'No' buttons, with 'No' selected.
- Transducer:** Two dropdown menus. Channel 1 is set to 'Phone'. Channel 2 is set to 'Phone'.
- Routing:** Two dropdown menus. Channel 1 is set to 'Right'. Channel 2 is set to 'Left'.
- Level (dB HL):** Two dropdown menus. Channel 1 is set to '40'. Channel 2 is set to '0'.
- Routing (Confirmation):** A text box asking 'When transducers are the same for both channels and Channel 1's routing changes to the opposite ear, should Channel 2's routing switch automatically?' with 'Yes' and 'No' buttons. 'No' is selected.
- PTA:** Two tables for 'AC PTA (Hz)' and 'BC PTA (Hz)'. Each table has frequency buttons (125, 250, 500, 750, 1k, 1.5k, 2k, 3k, 4k, 6k, 8k) and gain buttons (1.00, 1.00, 1.00). In the AC PTA table, 500, 1k, and 2k are selected. In the BC PTA table, 500, 1k, and 2k are selected.
- Reliability:** A list box with 'Good', 'Fair', and 'Poor'. To the right are 'Delete', 'New', and 'Save' buttons.

New Session

Allows the user to select the default test type, audiogram display and channel settings when a new session is started.

- Initial Screen: Select the default test type that will be displayed with a new session.
- Graph Orientation: Select the default audiogram display. Select between Left/Right, Right/Left, or Combined.
- Select the default bone conduction setting.
- Select the default transducer, routing and dB HL levels for Channel 1 and Channel 2.

NOTE: The graph orientation may be changed in the configuration screen of the AudioStar Pro. The change will be active until the AudioStar Pro is restarted. When restarted, the graph orientation setting will revert to the default setting.

NOTE: The bone conduction symbol scheme may be changed in the configuration screen of the AudioStar Pro. The change to the symbols will be active for the current session. When a new session is started, the configuration setting will revert to the default setting.

Reliability

Enter and Save a list of words that describe the reliability results for the patient. Up to 15 characters may be typed into the field below the reliability window and saved by clicking Save.

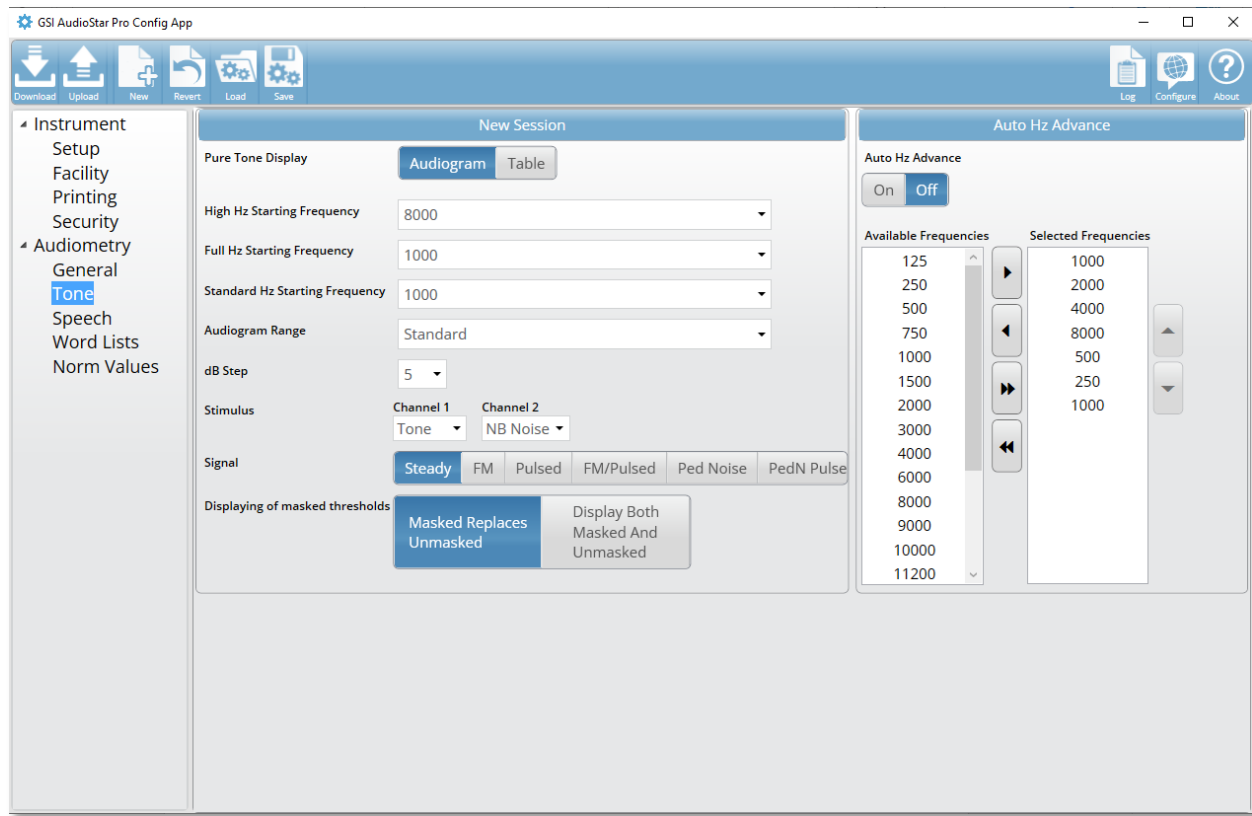
Routing

When transducers are the same for both channels, select Yes to have Channel 2 routing switch to the opposite ear automatically when Channel 1 ear changes. Select No for independent routing between channels.

Pure tone Average (PTA) settings

Select the frequencies to be used for PTA/AC and PTA/BC calculations. The number above each frequency is a multiplier for that frequency in the calculation of the PTA.

Tone



New Session

Allows the user to select the default Pure Tone audiometric display, starting frequency, dB step size and stimulus settings when a new session is started.

- Pure Tone Display: Determines whether the audiometric results display on audiogram or in a table.

NOTE: The operator may quickly toggle between Audiogram and Table screens by pressing the Table/Audiogram button on the front panel of the AudioStar Pro.

- Select the default starting frequencies for Standard, Full and High Hz ranges.
- Audiogram Range: Select the default frequency range of Standard (125-8000 Hz), Full (125-20,000) or High (8000-20,000 Hz).
- Select the default Decibel (dB) Step: Select 1, 2 or 5 dB for the attenuator step size.
- Select the default stimuli for Channel 1 and Channel 2.
- Select the default test signal of Tone, FM or Pediatric Noise and whether the signal is Pulsed or Steady.

- Select the default masking setting. Select Yes to store both masked and unmasked symbols on the audiogram. Select No to store only the masked symbol when applicable.
-

NOTE: The masking setting may be changed in the AudioStar Pro configuration screen, Settings menu. The change will become active for the current session. When a new session is started, the configuration will revert to the default setting as determined in Config App.

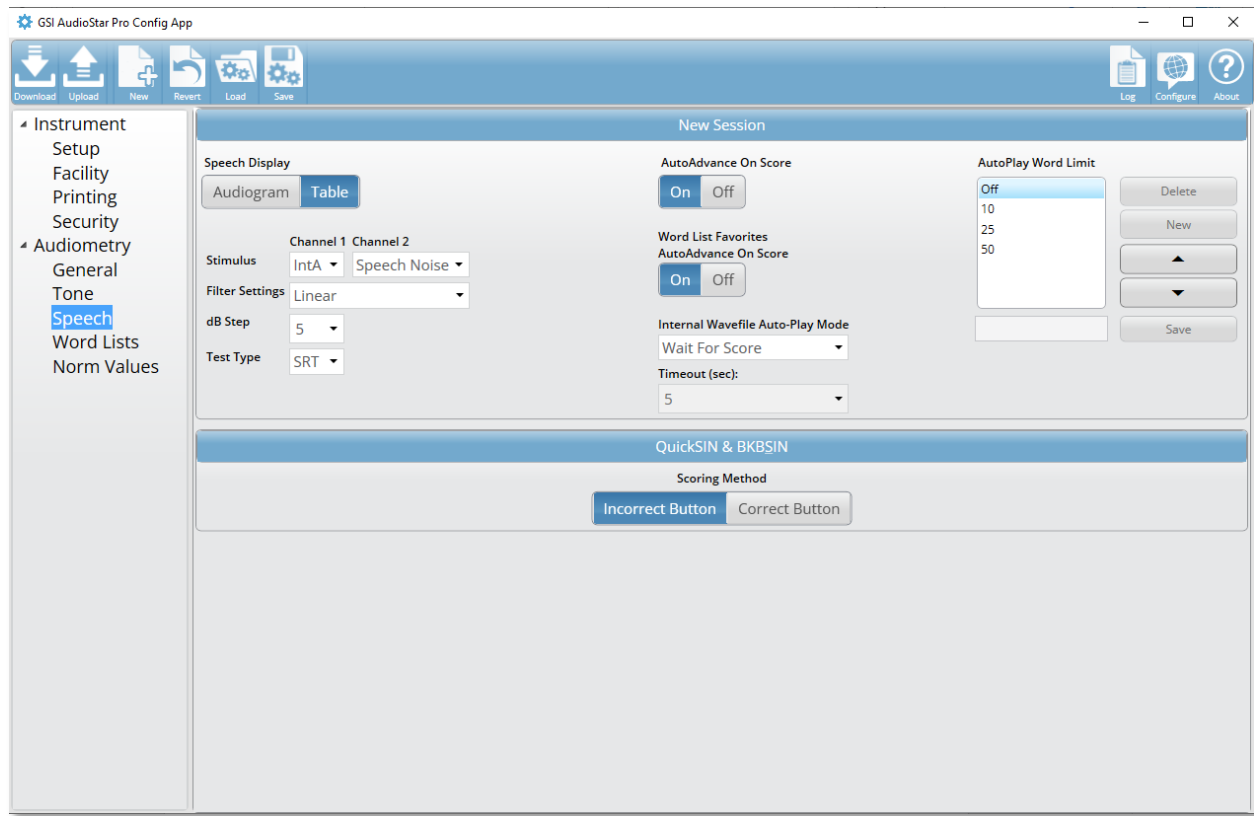
Auto Hz Advance

When enabled, Auto Hz affects the behavior of the AudioStar Pro when a pure tone threshold is stored.

- Select the default Auto Hz Advance setting.
 - Select from the available frequencies (left column) and place in the order in which pure tones are typically presented (right column) and download to the instrument.
 - When Auto Hz is set to On and the Store button is pressed on the AudioStar Pro, the instrument will automatically advance to the next frequency as designated in the Config App.
-

NOTE: This feature may be disabled on the AudioStar Pro by de-selecting Auto Hz in the toolbar on the instrument. It is possible to deviate from the test order at any time.

Speech



New Session

Allows the user to select the default Speech display screen, filter settings, stimulus settings, and automatic speech settings when a new session is started, and the Speech Test Type button is pressed.

- **Speech Display:** Select the default Speech view that will be displayed when the Speech test type button is pressed. Choices include Speech Audiogram or Speech Table View.
- **Select default stimuli for Channel 1 and Channel 2.**
- **Filter Settings:** Choose between linear, equivalent free field and nonlinear filter settings.
- **Decibel (dB) Step:** Choose between 1, 2 or 5 dB for the attenuator step size as the default setting.
- **Test Type:** Select the default speech test from SRT, SDT, WRS, SRS, MCL or UCL.
- **Auto Advance on Score:** When selected will automatically advance the AudioStar Pro to the next word in the word list when the word is scored correct or incorrect. This can be de-selected on the AudioStar Pro in the Word Nav menu in the toolbar.

- Auto Advance Word List Favorites: When selected will automatically advance to the next word list in the favorites list when a result is stored. This can be de-selected on the AudioStar Pro in the Word Nav menu in the toolbar.

NOTE: The operator may quickly toggle between Speech Audiogram and Speech Table screens by pressing the Table/Audiogram button on the front panel of the AudioStar Pro.

NOTE: Auto Advance operates independently from the Auto-Play/Auto Score options.

- Internal Wave File Auto-Play Mode: Select from 4 options for automatic presentation of words.
 - 1. Wait for Score:** The next word in the word list will not present until the test word is scored correct or incorrect.
 - 2. Time Expire Correct:** Words will be automatically presented after the Timeout (sec) and scored correct unless otherwise scored incorrect.
 - 3. Time Expire Incorrect:** Words will be automatically presented after the Timeout (sec) and scored incorrect unless otherwise scored correct.
 - 4. Time Expire No Score:** Words will be automatically presented after the Timeout (sec) and not scored.

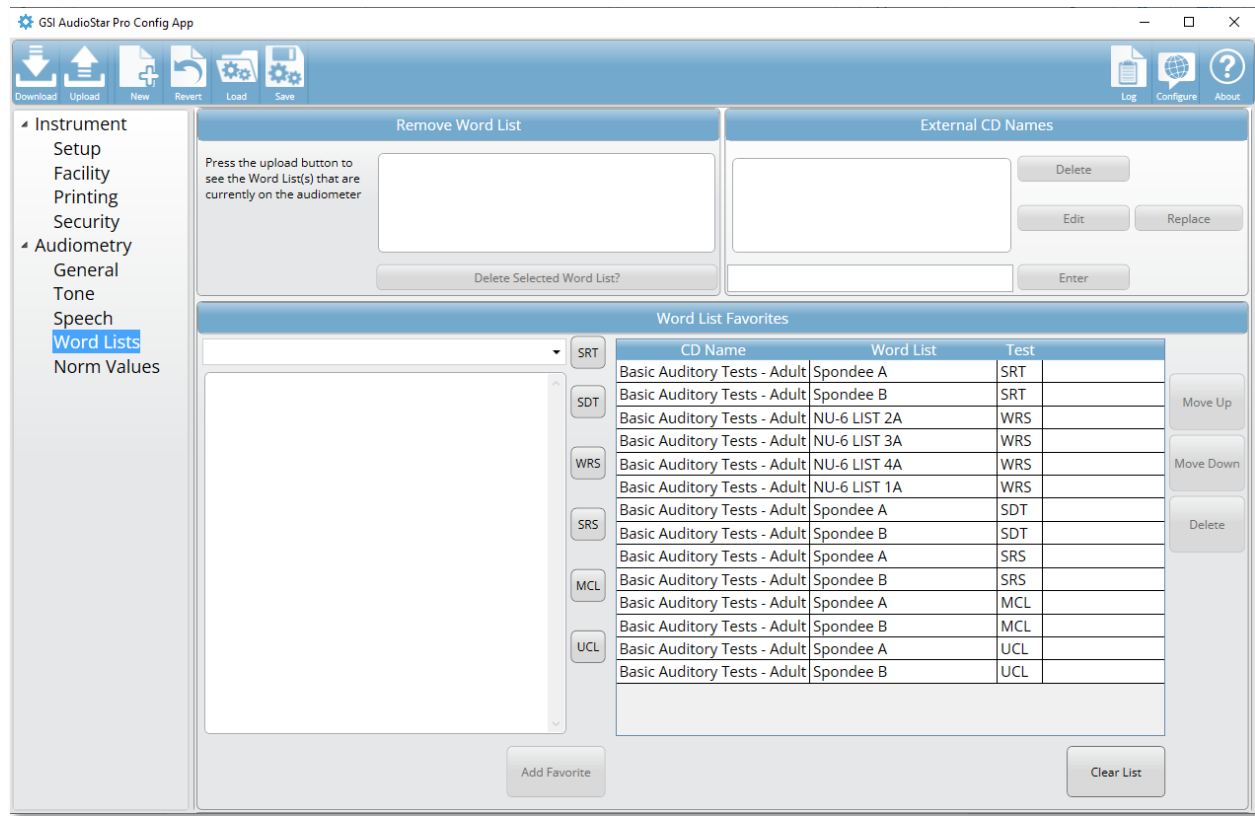
NOTE: Auto-Play function may be initiated by pressing the interrupt button of the AudioStar Pro. Auto-Play function can be disabled (set to Manual) at any time in the Word Nav menu on the AudioStar Pro.

- Timeout (sec): Amount of time that elapses between the automatic presentation of words. Only applies to options 2, 3 and 4.
- Auto Play Word Limits: Select the number of words that will be played when Auto Play in speech is enabled. When set to Off the entire word list is played. Buttons on the side allow you to enter new limits and order the limit choices.

QuickSIN & BKB-SIN

Determines whether to use the correct or incorrect button for scoring.

Word Lists



Remove Word List

When settings from the AudioStar Pro are uploaded, this window will be populated with word lists currently loaded on the audiometer. It is possible to delete unwanted word lists.

- Select the unwanted word list and press Delete Selected Word List? button.
- A warning will appear; confirm that the word list selected is to be deleted from the instrument.
- When Yes is selected, the instrument will be locked for several minutes while the list is *permanently* deleted.

NOTE: When a word list is deleted, it is a permanent change. The action cannot be undone. To reload a word list, it is necessary to receive the appropriate file from a GSI representative on a USB drive to update the instrument.

External CD Names

This pane allows the facility to enter the names of External CDs used for routine testing.

- External CD names may be chosen from the AudioStar Pro and may be included on the report.
- External CD names may be Edited and Replaced as needed.

Word List Favorites

After uploading the configuration, word list favorites can be created or modified for each test type for quick access on the AudioStar Pro. Default Word List Favorites using most used lists are included by default in the Config App and on the AudioStar Pro.

CD Name	Word List	Test
Basic Auditory Tests - Adult	Spondee A	SRT
Basic Auditory Tests - Adult	Spondee B	SRT
Basic Auditory Tests - Adult	NU-6 LIST 2A	WRS
Basic Auditory Tests - Adult	NU-6 LIST 3A	WRS
Basic Auditory Tests - Adult	NU-6 LIST 4A	WRS
Basic Auditory Tests - Adult	NU-6 LIST 1A	WRS
Basic Auditory Tests - Adult	Spondee A	SDT
Basic Auditory Tests - Adult	Spondee B	SDT
Basic Auditory Tests - Adult	Spondee A	SRS
Basic Auditory Tests - Adult	Spondee B	SRS
Basic Auditory Tests - Adult	Spondee A	MCL
Basic Auditory Tests - Adult	Spondee B	MCL
Basic Auditory Tests - Adult	Spondee A	UCL
Basic Auditory Tests - Adult	Spondee B	UCL

- Select the CD from the drop-down list.
- Highlight each word list to be added to favorites.
- Select the appropriate Test Type and press Add Favorite.
- Selected CD Name, Word List and Test Type will appear in the window on the right side.
- Sort the selected word lists by pressing the Move Up and Move Down.
- Highlight a word list and press Delete to remove it from favorites.
- Press Clear List to remove all word lists from favorites.

NOTE: Multiple word lists may be selected for each Test Type.

Word List Favorites will appear on the AudioStar Pro when the word list menu is selected.

When a speech test type is selected on the AudioStar Pro display menu, the first wordlist in the favorites list of that test type will be automatically populated.

Norm Values

Country or site-specific normative data may be entered and displayed on the speech audiogram view. If Display on the AudioStar Pro check box is checked, normative speech audiometry curves will appear on the Speech Audiogram screen based on the values entered on this view in the Config App.

Phones				Sound Field			
Multi-syllable		Single syllable		Multi-syllable		Single syllable	
dB HL	%	dB HL	%	dB HL	%	dB HL	%
12	0	16.5	0	12	0	16.5	0
15	20	20	11	15	20	20	11
18.5	50	22.5	20	18.5	50	22.5	20
20	58	25	33	20	58	25	33
22	70	26	40	22	70	26	40
24	80	30	55	24	80	30	55
27	90	31	60	27	90	31	60
30	100	35	72	30	100	35	72
		40	84			40	84
		46	100			46	100

Sample Norm Values for Configuration screen based on the DIN 45626 standard.

TROUBLESHOOTING

ERROR MESSAGES

Not allowed to access the instrument!

Can occur when attempting to Download to or Upload from the instrument if no connection exists to the PC. Check that the audiometer is connected to the PC and turned on. Check that the USB on the PC is connected and active (no suspend USB" power option).